



# Logistics Services Overview



**With roots dating back to 1993, Frampton Construction is a full-service construction firm offering planning and design support, preconstruction, and construction services.**

Our dedicated team of professionals take pride in delivering an individualized construction experience, from concept to close out.

**No corners cut, no stone unturned.**

We don't hide from change; we embrace it, striving to become a different company every single day in our quest to re-imagine commercial construction into something wholly unique. Something fresh and exciting.

**Something different.**

We define ourselves by a different measurement scale, building upon our foundation of integrity and trust to do the right thing right, giving every project our all as if it were our own.

Each day, we challenge everything we've ever done in the pursuit of everywhere we have yet to go. Because, to us, it's never just a job. It's an opportunity to build better lives for our clients, our coworkers, and our community. And that's why we'll never rest until we get it right.

## Guiding principles

**MISSION:** Empower the best to build the best.

**VISION:** Build better lives.

**BRAND MOTTO:** Experience the difference.

**CORE VALUES:** Dynamic, Optimistic, Committed

## Awards & recognition



**ENRSoutheast**  
TOP CONTRACTOR



## We think long-term, not “one and done,” establishing partnerships around shared values and building relationships that last.

### Early Project Development

Working with municipalities through the early project development stage is the most complex and critical aspect of a project. Our team navigates this process better than anyone in the industry, identifying and mitigating risk at each critical step.

- Site analysis, feasibility, and selection
- Land acquisition and entitlement
- Site and building permitting
- Risk identification and mitigation
- Utility coordination and planning

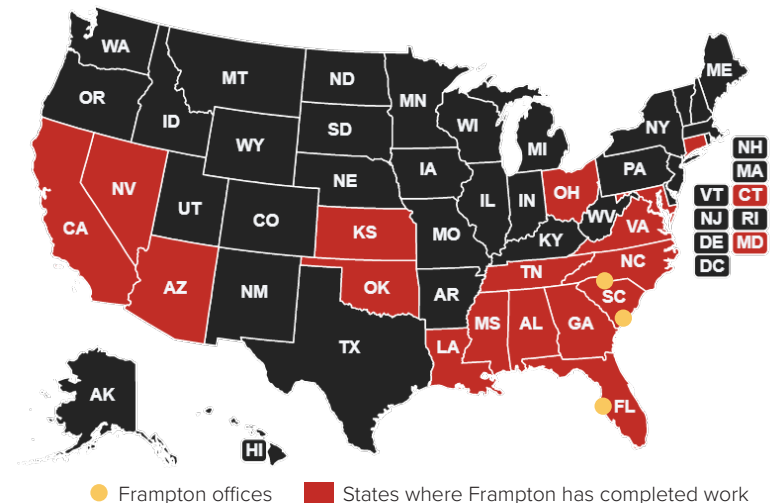
### Front-End Planning and Preconstruction

We pride ourselves on our “head-first” approach to project planning. Our preconstruction team is focused on understanding full site development costs and driving competitive pricing while maintaining the overall project schedule.

- Budget and schedule development
- Constructibility planning and analysis
- Value engineering and historical cost analysis
- Market analysis and market comparisons
- Risk management and logistics planning
- Startup and commissioning



With offices in Charleston, S.C., Charlotte, N.C., and Tampa, Fla., Frampton is a southeast-based company with the ability to execute work nationally. Wherever you venture, we'll be there.



### Focused Project Delivery

We execute our work at the highest level for the entire life-cycle of a project. Our proven process and procedures ensure that we will meet or exceed schedule expectations without sacrificing safety or quality. Frampton's delivery approach is underpinned by transparency and trust.

- Design-build
- General contracting
- Construction management
- Process and equipment procurement and Installation
- Safety and quality management



# Our greatest strength lies in our exceptional team members.

We heavily invest in our workforce through training, cutting-edge technology adoption, and a robust leadership development program. This dedication to our team members has enabled Frampton Construction to consistently deliver top-tier construction projects while fostering a culture of excellence and growth.

When our team members experience satisfaction and fulfillment, our clients reap the rewards.



### **Team Member-Centric**

We believe that the success of any construction project begins with its people. Our core values focus on creating a supportive, collaborative, and empowering work environment.



### **Highly Skilled & Committed Workforce**

Frampton Construction prides itself on its dedicated and highly skilled team members. A stringent hiring process ensures we recruit individuals who share our values and commitment to quality.



### **Continuous Training**

From safety certifications to advanced construction techniques, team members have access to the resources necessary for professional development.



### **Innovation & Technology**

We stay at the forefront of construction technology and methodologies. A commitment to innovation ensures that our team is equipped to deliver exceptional results.



### **Leadership Development**

Recognizing the importance of effective leadership in construction projects, our EMPOWERS leadership development program nurtures leadership potential among our team members.



### **Safety and Quality Assurance**

Safety and quality are non-negotiable priorities for Frampton Construction. We provide our team members with comprehensive safety training and promote a culture of accountability.

**Putting people first, always.**

We've made strategic investments in top-notch technology to meticulously plan your project upfront for a seamless and highly successful construction phase.



A comprehensive **land development and site optimization** software that can reduce costs, and enhance sustainability.



Efficiently **manage earthwork operations for accurate takeoffs**, cost estimation, and project planning.



BUILDINGCONNECTED



Bid management platform that streamlines project communication, **bid collection, and subcontractor selection**.

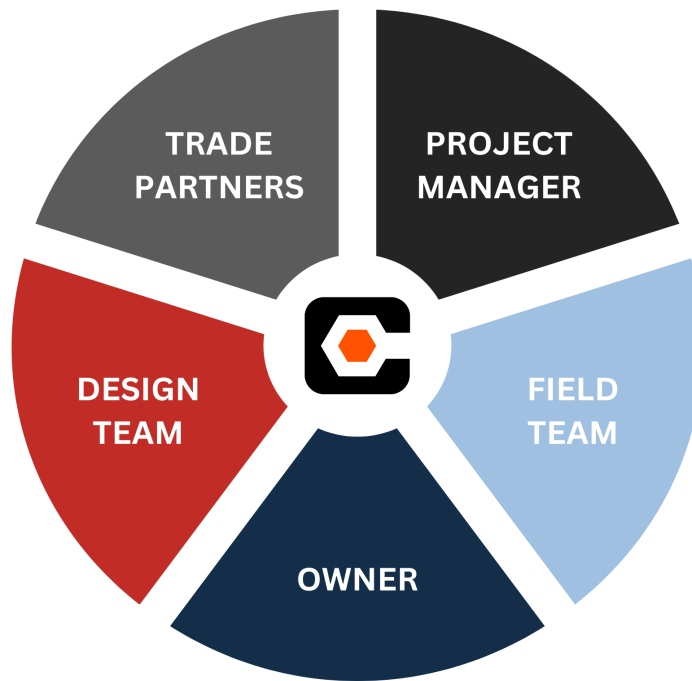


Enables us to **evaluate and mitigate subcontractor risks**, ensuring a more secure and successful project execution.



Estimating software that empowers users with **accurate and efficient cost estimation capabilities**, enhancing project planning and budgeting.

Procore construction management software facilitates collaboration and provides tools for real-time communication, document sharing, and issue tracking to ensure everyone is on the same page.



#### Document Management

Procore is a centralized repository for all project-related documents, including plans, drawings, specifications, contracts, permits, and change orders.

#### Scheduling

Offers scheduling tools like Gantt charts, critical path analysis, and resource allocation to optimize project timelines.

#### Cost Management

The platform allows for the creation of detailed cost reports, change order management, and forecasting to control project finances effectively.

#### Field Management

We use Procore's mobile app for field reporting, daily logs, field notes, and progress photos. Information from the job site is captured and shared efficiently.

#### Quality and Safety Management

Procore allows us to enforce quality and safety protocols by tracking safety incidents, inspections, punch lists, and quality assurance processes.



# PROCORE®

Procore is a comprehensive, cloud-based construction management software that streamlines communication by connecting field to office on a single mobile platform, ensuring everyone is working off the most up-to-date information.

Positioning our logistics clients to run more efficiently, safely, and quickly.



## Relevant work experience:

Project	Location	Status	Type
Old Dominion Freight Line	Rock Hill, SC	In Progress	New, 80 doors
SAIA LTL Freight	Macon, GA	In Progress	New, 30 doors
SAIA LTL Freight	Summerville, SC	In Progress	New, 12 doors
SAIA LTL Freight	Louisville, KY	In Progress	New, 75 doors
Old Dominion Freight Line	Anderson, SC	Complete	New, 43 Doors
Old Dominion Freight Line	Pendergrass, GA	Complete	31 Door Expansion
Old Dominion Freight Line	Cleveland, OH	Complete	34 Door Expansion
TradePort Logistics	Charleston, SC	Complete	New, 130 Doors
Old Dominion Freight Line	Columbia, SC	Complete	New, 63 Doors
Old Dominion Freight Line	Milford, CT	Complete	Renovation
Old Dominion Freight Line	Hagerstown, MD	Complete	Renovation
Old Dominion Freight Line	Richmond, VA	Complete	20 Door Expansion
Old Dominion Freight Line	Chesapeake, VA	Complete	24 Door Expansion
Southeastern Freightlines	Pooler, GA	Complete	44 Door Expansion
Old Dominion Freight Line	McDonough, GA	Complete	New, 75 Doors
Old Dominion Freight Line	Charlotte, NC	Complete	Upfit & Utility Work
Southeastern Freightlines	Mt. Crawford, VA	Complete	New, 45 Doors
Southeastern Freightlines	Fredericksburg, VA	Complete	40 Door Expansion
Southeastern Freightlines	Florence, SC	Complete	24 Door Expansion
Southeastern Freightlines	Columbia, SC	Complete	28 Door Expansion
Southeastern Freightlines	Fayetteville, NC	Complete	24 Door Expansion

## Market Leaders



**Keaton Green**  
 Vice President  
 843-296-4290  
 kgreen@frampton.construction



**Adam Wall**  
 Director  
 843-296-4290  
 awall@frampton.construction

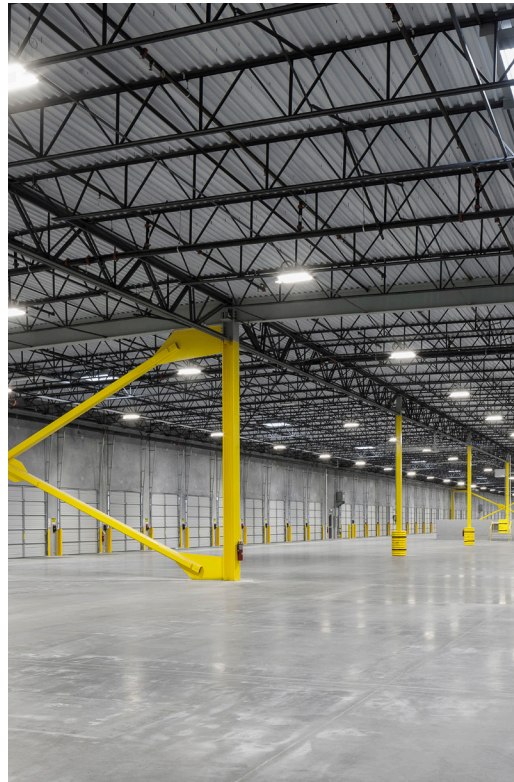


# TradePort Logistics

---

This new, 130-door, 89,000-square-foot facility is vital to TradePort Logistics' transloading operation, which services high-volume retailers focused on speed-to-market. Located off Clements Ferry Road, in the Cainhoj area, the site provides proximity to the Port of Charleston.

The concrete tilt-up building will have a 20-foot clear height, with 130 dock-doors and 630 trailer parking spaces. Approximately 2,000-square-feet of office space will be located at the front of the facility, which will have 110 employee parking spaces. An access road is being built to connect the facility to Charleston Regional Parkway.



<b>LOCATION:</b>	Charleston, SC
<b>SIZE:</b>	130 Doors
<b>OWNER:</b>	TradePort Logistics
<b>ARCHITECT:</b>	Berenyi Incorporated
<b>TYPE:</b>	New Construction
<b>COMPLETED:</b>	2022

# Old Dominion Freight Line: Columbia, SC

---

Frampton mobilized in February 2021, to build a new 63-door service center for Old Dominion Freight Line in Columbia, SC.

Situated on 20 acres, the new facility includes 28,000-square feet of dock space to accommodate up to 63 trucks and a 5,681-square foot office with a driver check-in area, conference/training room, and staff office area. The building envelope is formed by concrete panels using the tilt-up construction method. Built to a new design standard, the Columbia service center serves as a prototype for all future ODFL service center builds.



- LOCATION:** Columbia, SC
- SIZE:** 63 Doors
- OWNER:** Old Dominion Freight Line
- ARCHITECT:** David Mollenkopf Architect
- TYPE:** New Construction
- COMPLETED:** 2021

# Saia LTL Freight Summerville, SC

---

The Saia Summerville project is a new 8,701-square-foot terminal facility. The project scope includes demolishing two existing buildings on the 4.97-acre property and building a new 12-door facility.

The new terminal will feature an office at the front of the building with a breakroom, offices, and a training room. The warehouse portion of the facility will have 12 dock doors and an expandable back wall for a future Phase 2 expansion.



<b>LOCATION:</b>	Summerville, SC
<b>SIZE:</b>	63 Doors
<b>OWNER:</b>	Saia LTL Freight
<b>ARCHITECT:</b>	Design 3 Architecture
<b>TYPE:</b>	New Construction
<b>COMPLETED:</b>	May 2024 (expected)

# Old Dominion Freight Line: McDonough, GA

Frampton mobilized in May 2019 to build a new 75-door service center for Old Dominion Freight Line in McDonough, GA.

Situated on 18 acres, the new facility includes 34,000-square feet of dock space to accommodate up to 75 trucks and a 5,500-square foot office with a driver check-in area, conference/training room, and staff offices. The building envelope is formed by concrete panels using the tilt-up construction method.

<b>LOCATION:</b>	McDonough, GA
<b>SIZE:</b>	75 Doors
<b>OWNER:</b>	Old Dominion Freight Line
<b>ARCHITECT:</b>	David Mollenkopf Architect
<b>TYPE:</b>	New Construction
<b>COMPLETED:</b>	2019

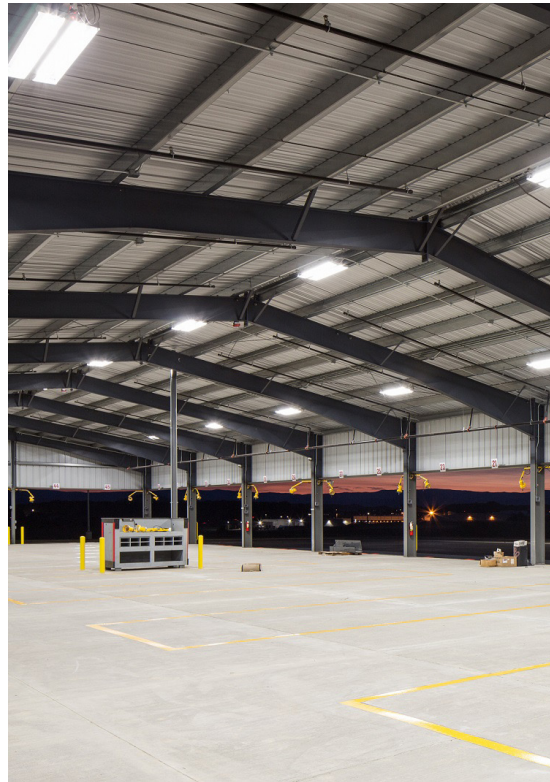


# Southeastern Freight Lines: Mt. Crawford, VA

---

This new 45-door service center is located in Mt. Crawford, Virginia, just four miles south of Harrisonburg, VA. The project scope included the construction of a 4,200 square-foot office, 13,600 square-feet of open dock, and 90 site trailer parking spaces.

Sitework preparation included blasting approximately 11,500 cubic yards of trench and mass rock excavation. A two-acre detention pond and swale manage the storm drainage runoff. The site truck asphalt pad consists of 17,000 square yards of heavy duty asphalt with 5,000 square yards of heavy duty concrete dock apron at the loading docks. The truck dock is open to accommodate truck loading and unloading.



<b>LOCATION:</b>	Mt. Crawford, VA
<b>SIZE:</b>	45 Doors
<b>OWNER:</b>	Southeastern Freight Lines
<b>ARCHITECT:</b>	Robert Johnson Architects
<b>TYPE:</b>	New Construction
<b>COMPLETED:</b>	2017



## Our promise:

We give every project our all, as if it were our own. We will outwork anyone else in the industry to serve our clients, and we carry our commitment to excellence through project closeout and beyond.

### **Charleston Office**

9705 Highway 78  
Suite 105  
Ladson, SC 29456  
843.572.2400

### **Charlotte Office**

4500 Cameron Valley Pkwy  
Suite 220  
Charlotte, NC 28211  
704.900.0511

### **Tampa Office**

4300 West Cypress Street  
Suite 200  
Tampa, FL 33607  
518.810.3762